



HORIZONTAL MULTISTAGE STAINLESS PUMPS TYPE: PM

General Data



PM (Horizontal Multistage Stainless Steel Pumps) are used for clean water or liquids of which chemical and physical characteristics are similar to those of water, widely used for high buildings, general industrial, circulation water in supply system, etc.





- **Ambient Temperature**

Maximum: +40°C

- **Liquid Temperature**

Standard design: -15°C to +90°C

For hot water design: -15°C to +120°C

- **Max operating pressure:** 10 bar

Max suction pressure is limited by max operating pressure Axial inlet and Radial outlet

- **Electric motor standard be supplied:**

50Hz, single phase 220V or three phase 380V, aluminum casing, IP54, classF.

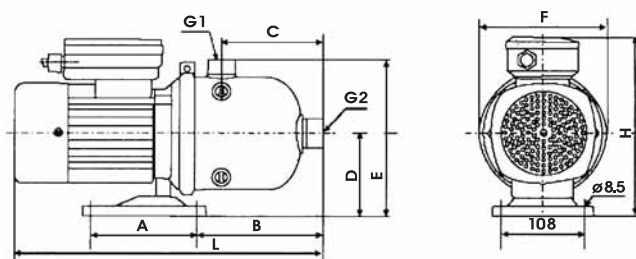
60Hz, single phase 110V or three phase 220V, aluminium casin, IP54, classF

- **Pump's material** can be supplied in 304 or 316 stainless steel.



Pump Identification Markings

PM	Horizontal Multistage Stainless Steel Pump
M	Frequency std 50Hz, M= 60Hz
2	Design capacity, 2m ³ /h
-20	Number of stages x 10



PUMP TYPE	L	H	G1	G2	A	B	C	D	E	F	Motor (kw)	Weight (kg)
PM2-20	400	210	1"	1"	138	160	130	110	208	165	0.37	9
PM2-30	400	210	1"	1"	138	160	130	110	208	165	0.37	9.5
PM2-40	400	210	1"	1"	138	160	130	110	208	165	0.55	10
PM2-50	400	210	1"	1"	138	160	130	110	208	165	0.55	10
PM2-60	400	210	1"	1"	138	160	130	110	208	165	0.75	10.5
PM4-20	400	210	1"	1 1/4"	138	160	130	110	208	165	0.55	10
PM4-30	400	210	1"	1 1/4"	138	160	130	110	208	165	0.75	11
PM4-40	400	210	1"	1 1/4"	138	160	130	110	208	165	0.75	11.5
PM4-50	400	210	1"	1 1/4"	138	160	130	110	208	165	1.0	12
PM4-60	400	210	1"	1 1/4"	138	160	130	110	208	165	1.1	12.5
PM8-10	420	210	1 1/2"	1 1/2"	138	179	138	120	242	204	0.55	10.5
PM8-15	420	210	1 1/2"	1 1/2"	138	179	138	120	242	204	0.75	12
PM8-20	420	210	1 1/2"	1 1/2"	138	179	138	120	242	204	1.0	14
PM8-25	450	235	1 1/2"	1 1/2"	138	179	138	120	242	204	1.5	17
PM8-30	450	235	1 1/2"	1 1/2"	138	179	138	120	242	204	1.85	21.5
PM8-35	450	235	1 1/2"	1 1/2"	138	179	138	120	242	204	2.2	23
PM8-40	450	235	1 1/2"	1 1/2"	138	179	138	120	242	204	2.2	24
PM12-10	420	210	1 1/2"	1 1/2"	138	179	138	120	242	204	1.0	12
PM12-15	450	235	1 1/2"	1 1/2"	138	179	138	120	242	204	1.5	13.5
PM12-20	450	235	1 1/2"	1 1/2"	138	179	138	120	242	204	1.85	21
PM12-25	450	235	1 1/2"	1 1/2"	138	179	138	120	242	204	2.2	24
PM12-30	540	235	1 1/2"	1 1/2"	138	179	138	120	242	204	3	27
PM16-10	452	228	2"	2"	138	175	136	120	242	205	1.0	13.5
PM16-20	452	228	2"	2"	138	175	136	120	242	205	1.5	17
PM16-30	520	235	2"	2"	138	201	162	120	242	205	2.2	23
PM20-10	420	218	2"	2"	138	175	136	120	242	205	1.0	20
PM20-20	452	228	2"	2"	138	175	136	120	242	205	1.85	22
PM20-30	520	235	2"	2"	138	201	162	120	242	205	3	25

PMM2-20	400	210	1"	1"	138	160	130	110	208	165	0.37	9
PMM2-30	400	210	1"	1"	138	160	130	110	208	165	0.55	10
PMM2-40	400	210	1"	1"	138	160	130	110	208	165	0.75	10.5
PMM2-50	400	210	1"	1"	138	160	130	110	208	165	0.75	11
PMM2-60	400	210	1"	1"	138	160	130	110	208	165	1.0	12
PMM4-20	400	210	1"	1 1/4"	138	160	130	110	208	165	0.75	12
PMM4-30	400	210	1"	1 1/4"	138	160	130	110	208	165	1.0	13
PMM4-40	400	210	1"	1 1/4"	138	160	130	110	208	165	1.1	14
PMM8-10	420	210	1 1/2"	1 1/2"	138	179	138	120	242	204	1.0	14
PMM8-15	450	235	1 1/2"	1 1/2"	138	179	138	120	242	204	1.5	17
PMM8-20	450	235	1 1/2"	1 1/2"	138	179	138	120	242	204	1.85	21.5
PMM8-25	450	235	1 1/2"	1 1/2"	138	179	138	120	242	204	2.2	24
PMM8-30	540	235	1 1/2"	1 1/2"	138	179	138	120	242	204	3	27
PMM12-10	450	235	1 1/2"	1 1/2"	138	179	138	120	242	204	1.5	17
PMM12-15	450	235	1 1/2"	1 1/2"	138	179	138	120	242	204	2.2	24
PMM12-20	540	235	1 1/2"	1 1/2"	138	179	138	120	242	204	3	27
PMM16-10	452	228	2"	2"	138	175	136	120	242	205	1.5	17
PMM16-20	520	235	2"	2"	138	175	136	120	242	205	3	23
PMM16-30	550	235	2"	2"	138	201	162	120	242	205	4	30
PMM20-10	452	228	2"	2"	138	175	136	120	242	205	1.85	23
PMM20-20	550	285	2"	2"	138	175	136	120	242	205	4	30



PARAGON PUMP (ASIA) PTE LTD

37, Kallang Pudding Road, #08-08
Tong Lee Building Block B, Singapore 349315
Tel : 6841 2818 Fax : 6841 5988